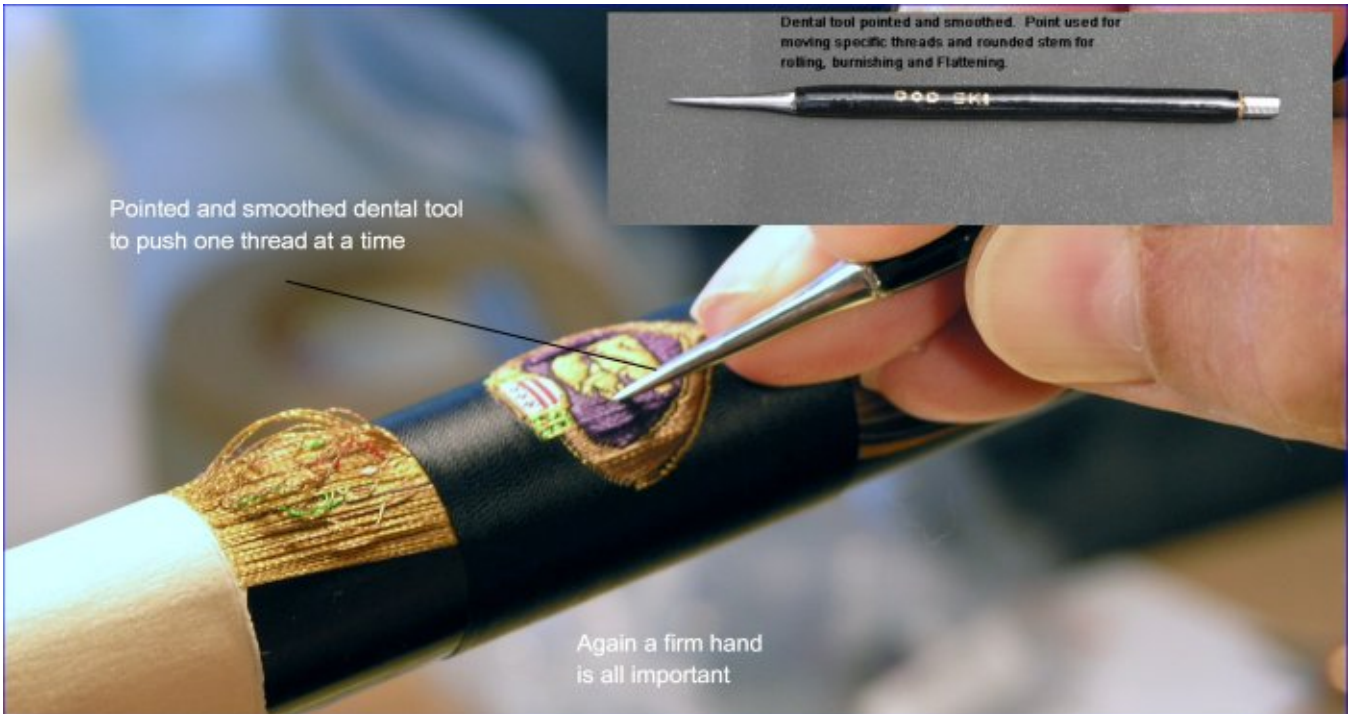
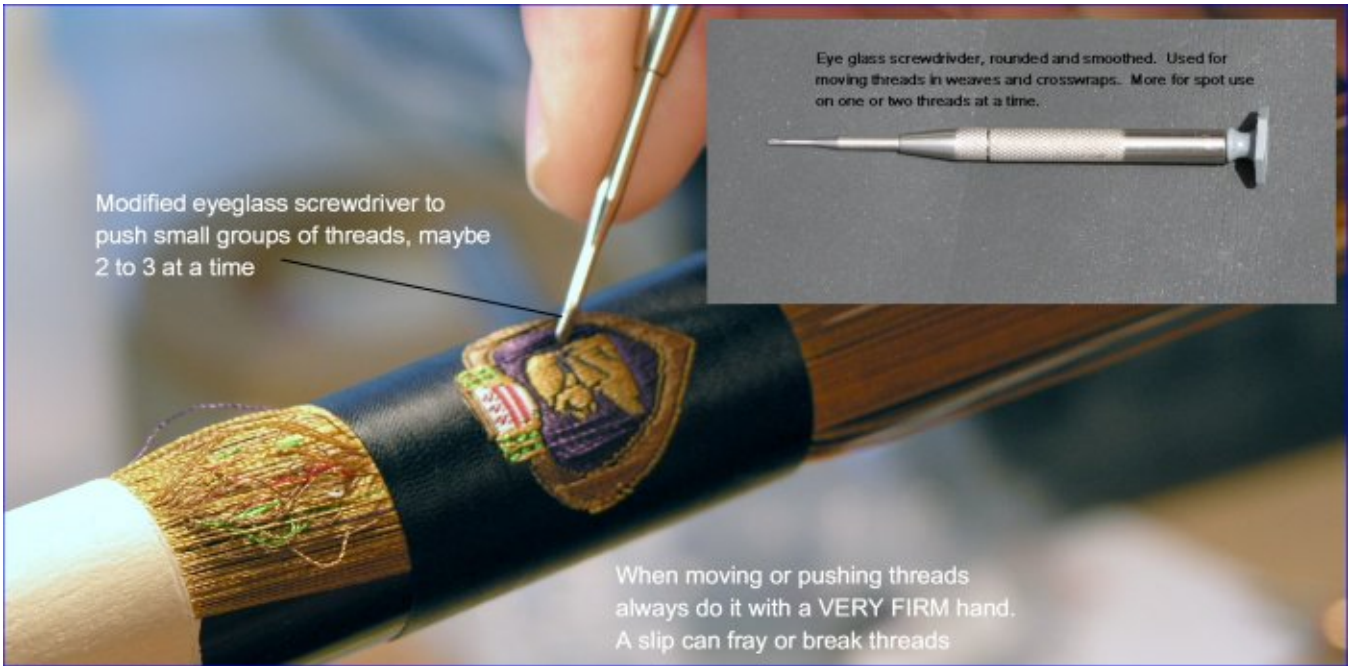


## Packing and Rolling Decorative Thread Art

The greatest compliment a decorative thread artist can receive is "Where can I buy those stickers ?" or "That looks like tape, can I buy some?" I am often asked how to get the wraps tighter and with less visible gaps. I have assembled some pictures during a recent weave and tried to make a picture tutorial. Pictures and videos are the easiest way for me to learn and I hope these can be of some help to those of you who are trying to tighten your wraps up. These techniques are being employed on a weave but I frequently use the same techniques on crosswraps with outstanding results. You will be amazed at how far threads can be moved (sometimes more than 1/8th of an inch) in an attempt to make that wrap look nearly flawless. One thing to remember though. YOU the builder know where those little fudges are, most other people (including rodbuilders) won't really see them. I have tried to show the tools, which are mostly hand made and the technique as best I can in the still medium. My biggest tip is to be firm and take your time, OH! practice helps too. If you need more clarification, please feel free to email or call me. Tight wraps gang.

Doc Ski  
Docski377@aol.com





Some closing of the gaps  
is already present



Threads are tightened by layers. I prefer to tighten the  
layers with the least amount of use first. In this case the  
reds, whites and greens first.



I always tighten from the right side first. As I finish a layer I cut the threads at an  
angle to help when whipping the ends. Tightening can increase some gapping.



Working on another layer, usually 4 to 6 threads at a time. I also like to pull the threads from the bottom half of the pattern in an upward motion. All in an attempt to create a tight weave.

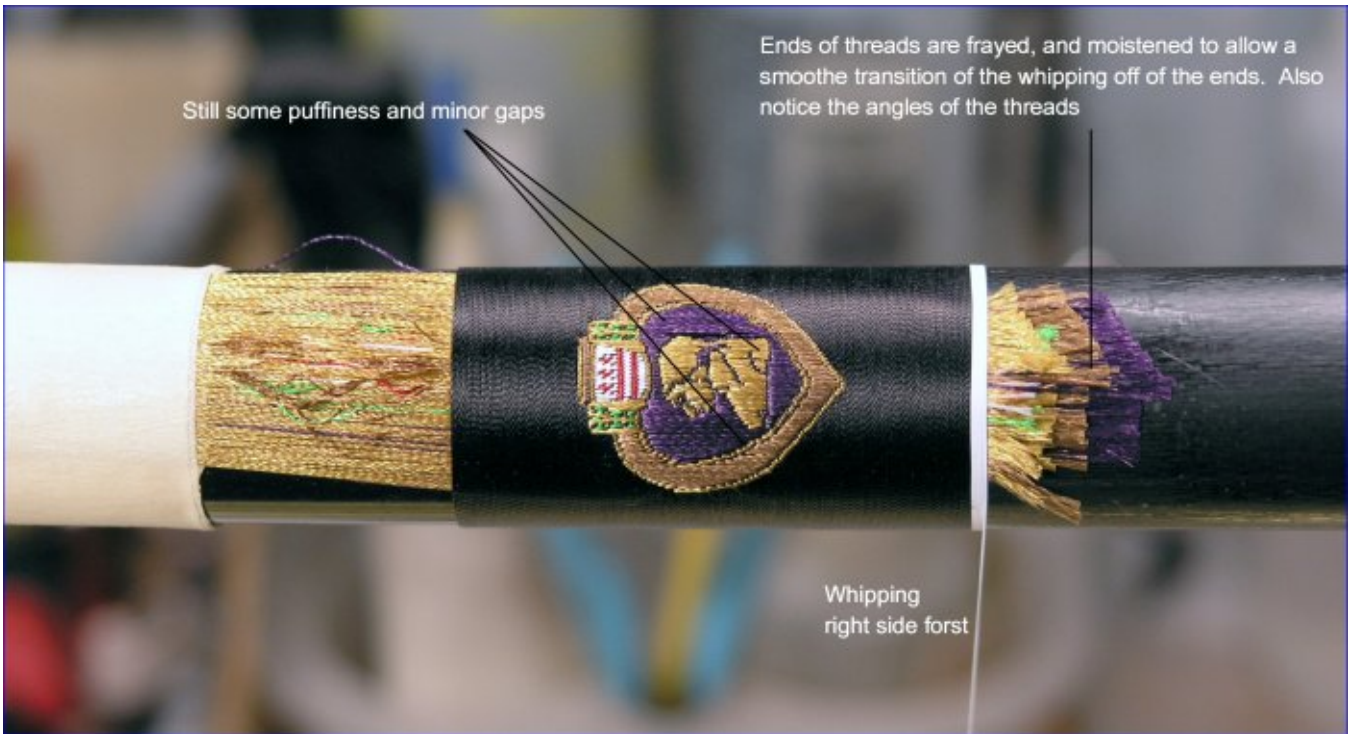


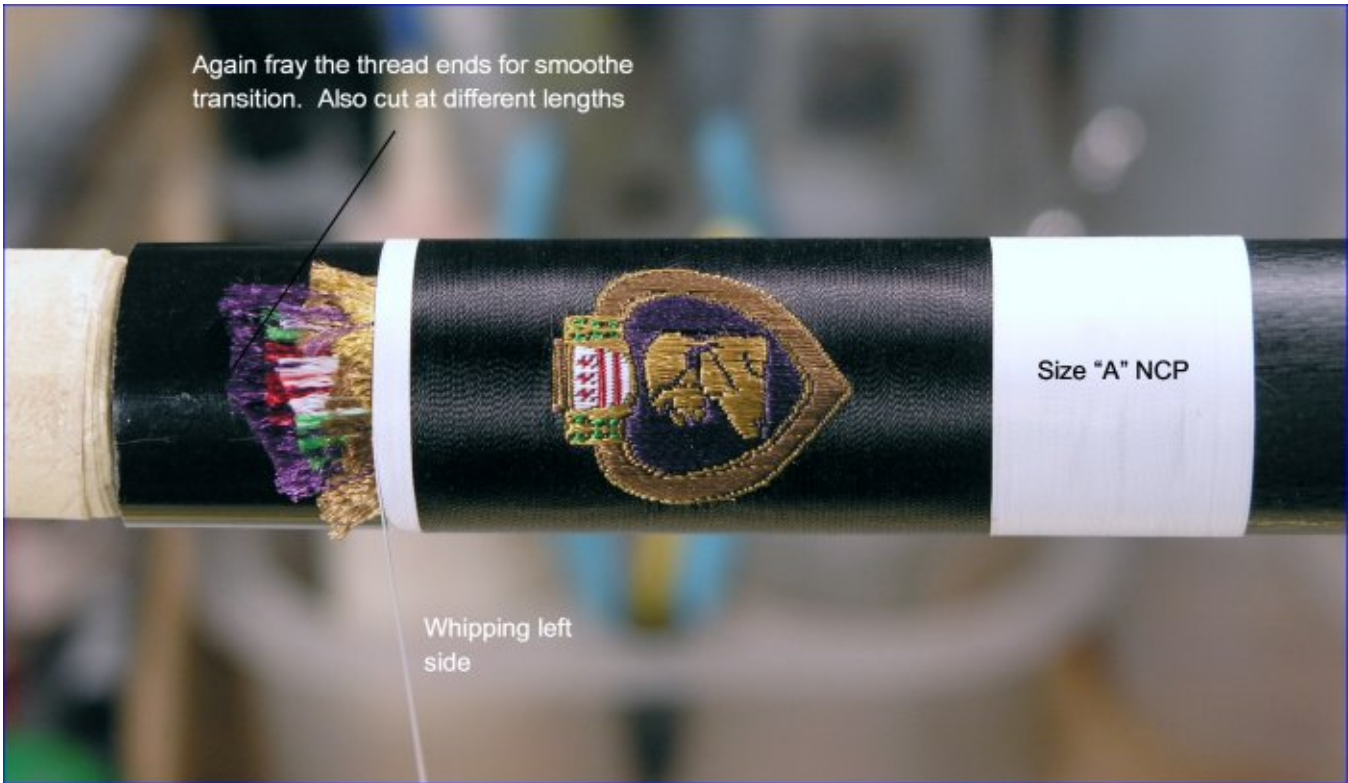
Tightening one layer usually results in puffing another layer more. In this case the purple is getting much looser as I work toward that layer

Again cutting threads at angles helps create a smoother whipping tie off



Tightening process has apparently loosened the last layer

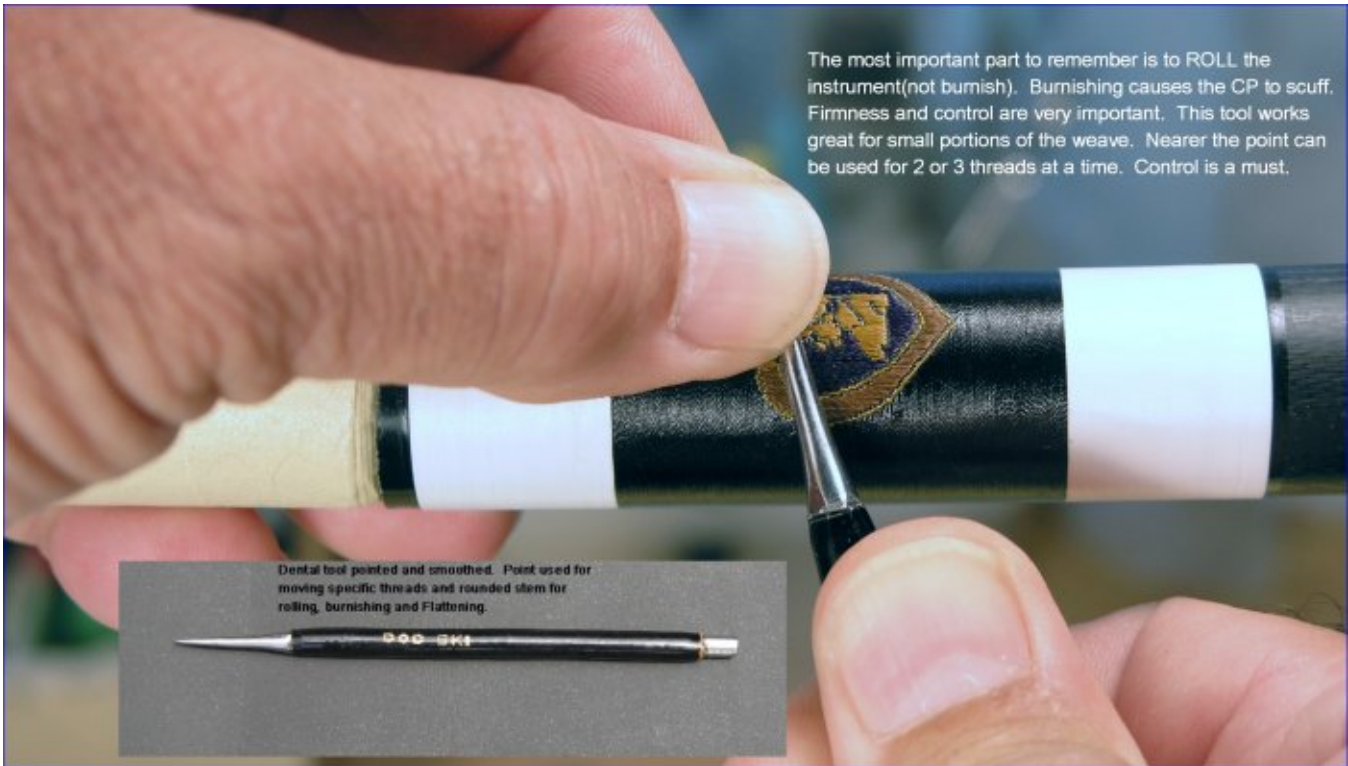




Ready for the application for Color Preserver but already very tight and very few gaps.



The most important part to remember is to ROLL the instrument(not burnish). Burnishing causes the CP to scuff. Firmness and control are very important. This tool works great for small portions of the weave. Nearer the point can be used for 2 or 3 threads at a time. Control is a must.



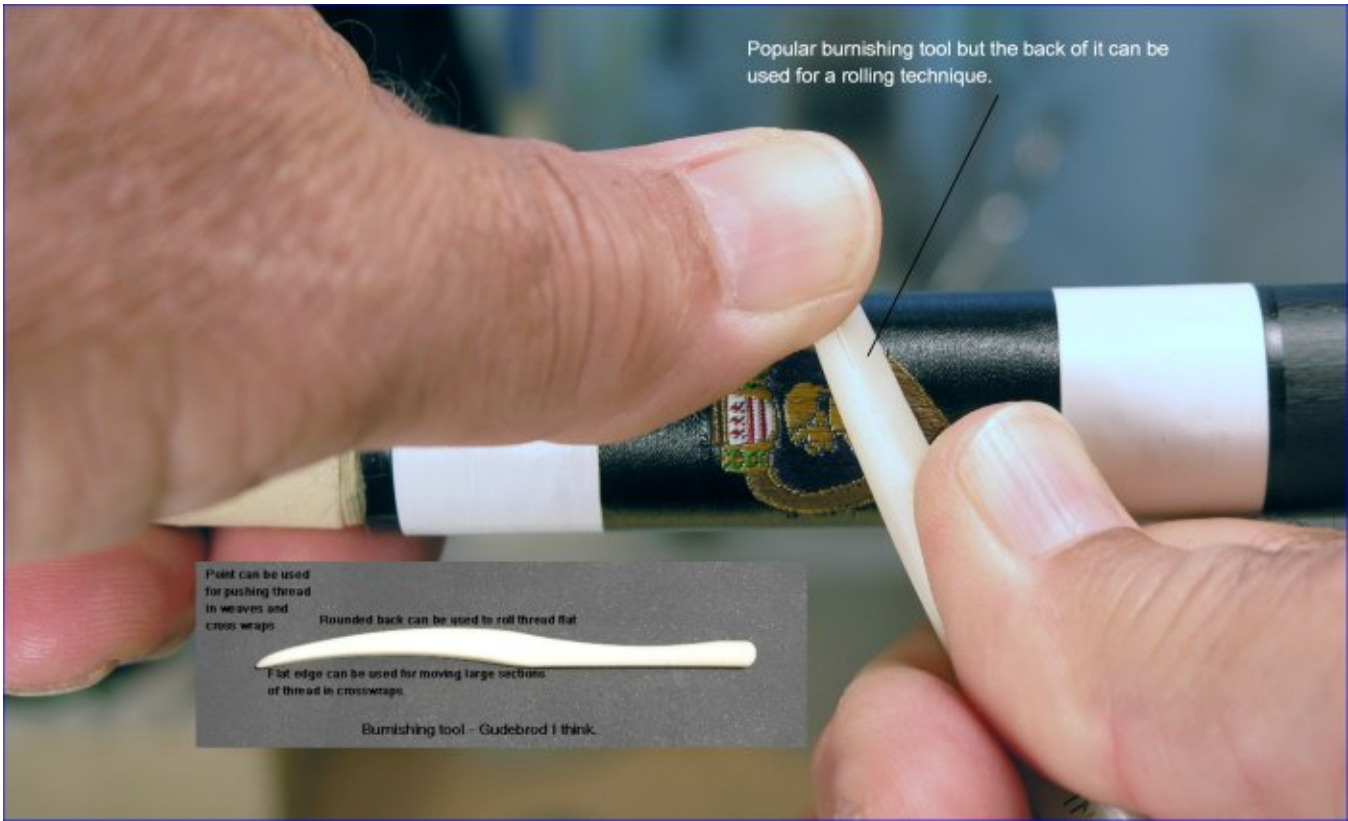
Metal Cheese slicer for large sections. Make sure you clean off the cheese first



Cheese slicer, metal.  
Great for large flattening  
and rolling jobs.

Sorry it is blurry





DONE DEAL, except I bet George  
Washington wa getter looking than this.  
HAPPY WRAPPING

Madeira 40-  
wt over size  
"A" with only  
CP applied

